



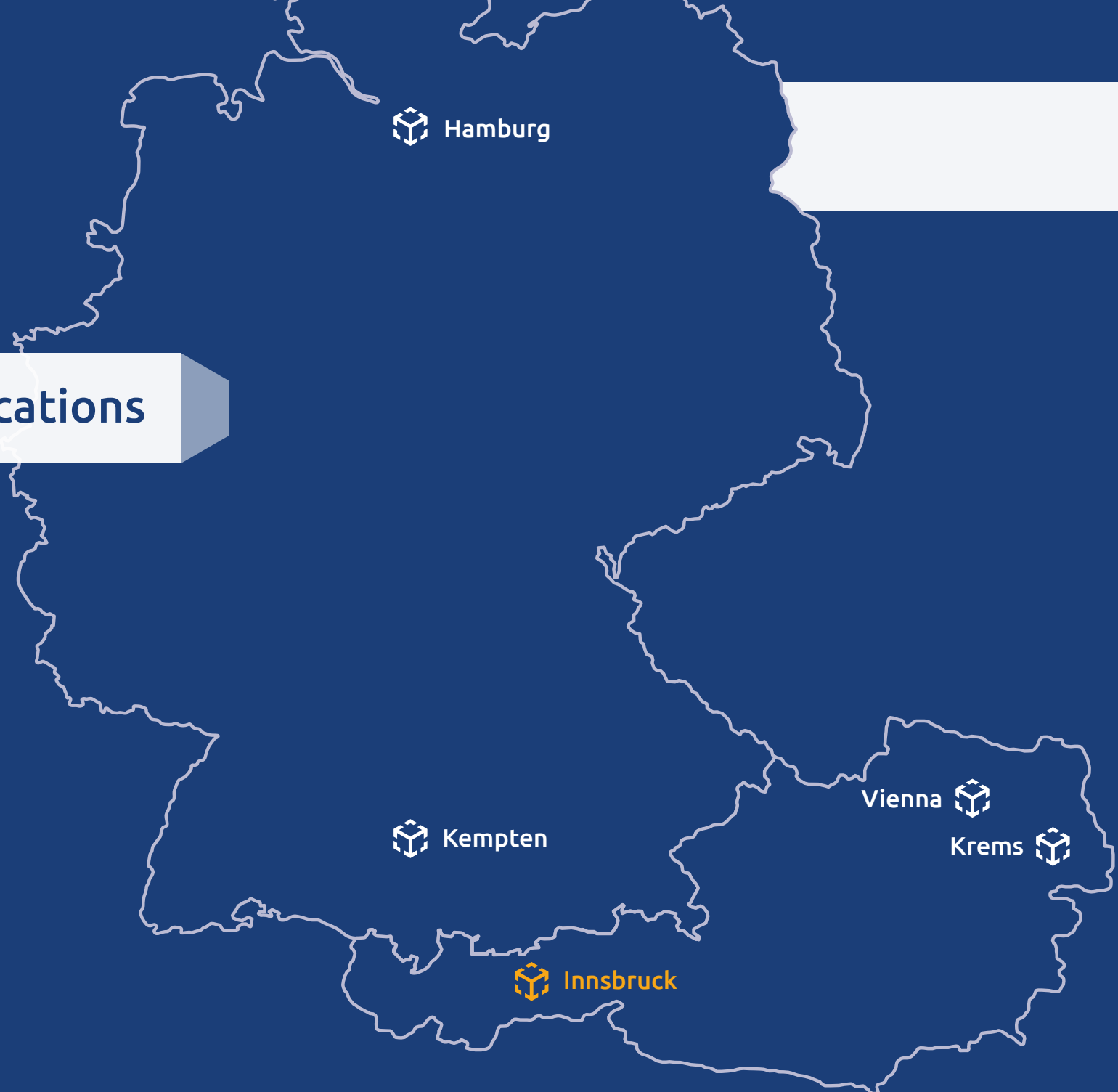
Digitise. Automate. Optimise.

Successful transport management through intelligent software support

Fair.
As partners.
Transparent.

Translogica's locations

2



About Translogica 4

Our history 6

How we work 7

**We have already created more
than 300 intelligent workflows for
our customers.**

You too can benefit from our expert
know-how as well as our many years of
experience in the logistics sector!

office@translogica.net

Functions of our logistics software.....10

Machine learning 12

Logistics software for (geo-) graphical scheduling 14

The perfect route planning 15

Logistical groupage functions for your forwarding company 16

Software for fleet management 17

Software-based workshop management 18

Intelligent warehouse management 19

Web portals for your forwarding company 20

Special features for logistical scanning 21

Document management for transport logistics 22

Successful digitisation 23

About Translogica



"Digitisation does not just mean digitising processes and collecting data. It's more about making the best use of data that is already available."

"In many companies, true treasures of digital information are already lying undiscovered. Re-interpreting these to derive new activities such as sales activities forms the basis for tremendous savings and growth potential."

DI Hansjörg Haller
CEO - Translogica GmbH

Translogica was founded in 2004 as an academic spin-off of the Institute of Computer Science at the University of Innsbruck.

Continuity, solid growth and expertise in the logistics sector have been the hallmarks of the company's philosophy ever since. Approximately 120 experts from IT, logistics and project management work at the headquarters in Innsbruck and at the locations in Vienna, Krems, Kempten and Hamburg.

With our unique and innovative software duo of translogica / dotiga, we offer a comprehensive Transport Document Management System (TDMS) that digitises and optimises the processes of logistics and transport companies.

"If you want to build a ship, don't drum up the men to gather wood, divide the work and give orders. Instead, teach them to yearn for the vast and endless sea."



Antoine de Saint-Exupéry on motivation
From: "The City in the Desert/Citadel"

Founding
Founded in 2004



Academic Spin-Off

First academic spin-off of the Institute of Computer Science at the University of Innsbruck



Awards

WKO - Science Award 2007
Science2Business Award 2012
VR Awards 2020 winner



Customers
over 500



Employee

Currently employs approx. 130 committed and highly qualified staff members



Users
over 14,000



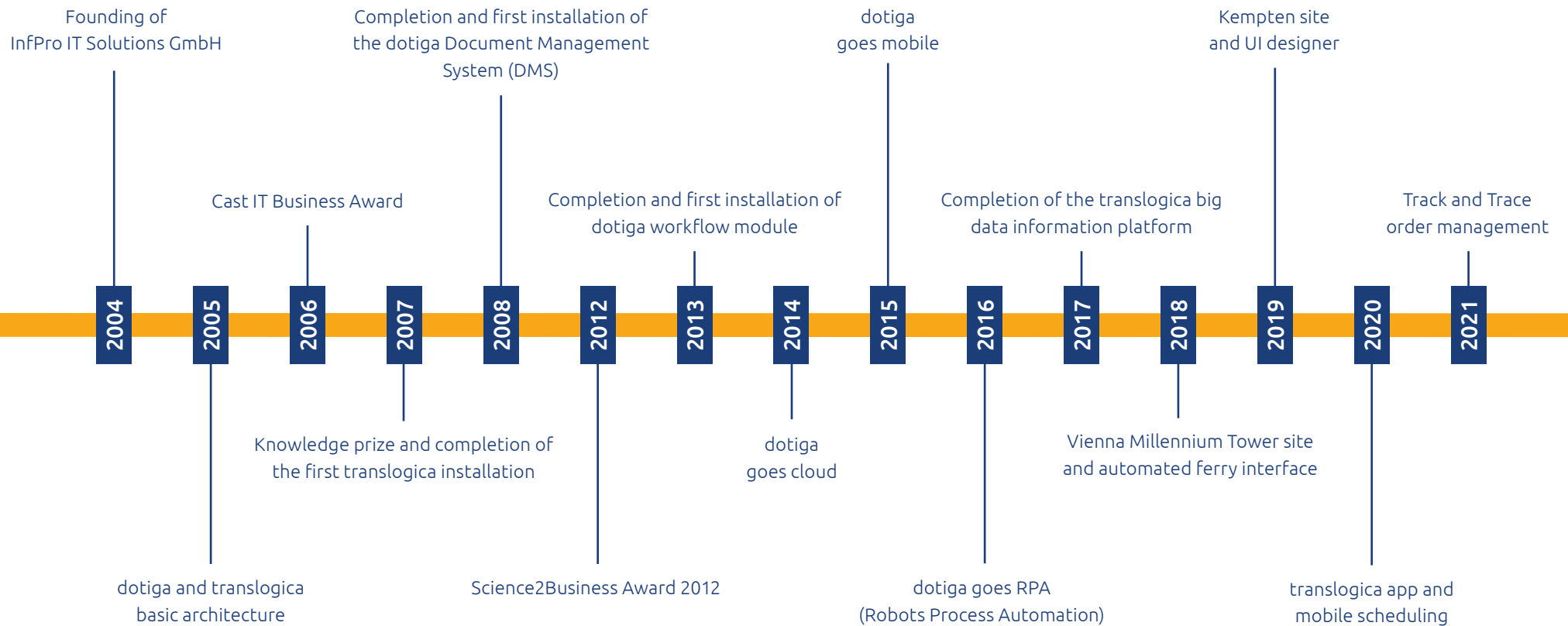
Best Employer 2022

Great Place to Work



Our history

6



Innovations deserve to be brought to life



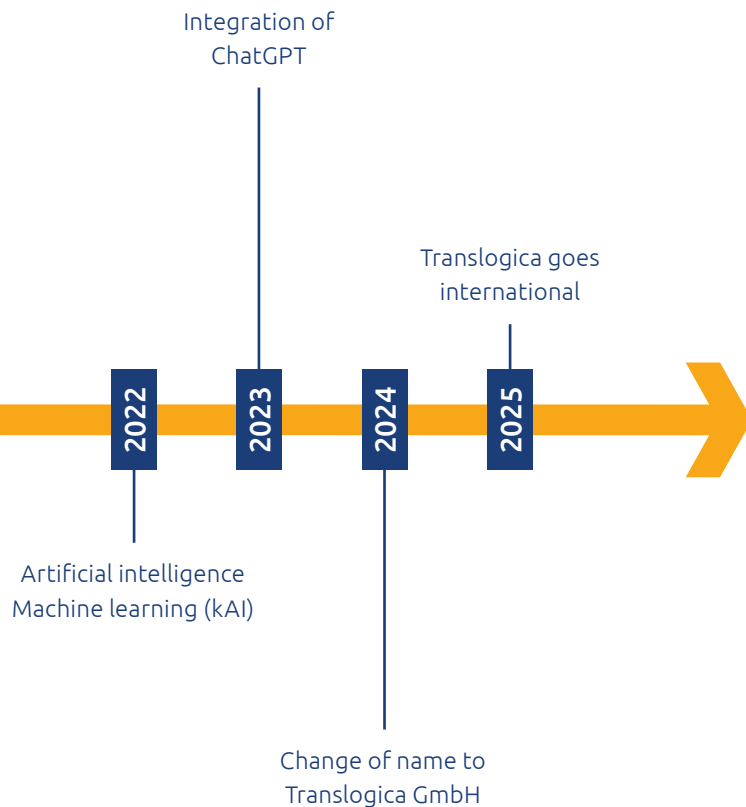
Hackathon ideas engine

The aim of the Translogica Hackathon is the collaborative production of useful, creative or entertaining software products.

Specific topics are always provided, while projects are often worked on in cross-functional teams. The regular Translogica events are regarded as an engine of ideas in the field of digitisation.

The better way to develop software products...

.. is the agile scrum working method. The focus is on the development team. Everything is aligned with customer-centric working, team spirit, the values conducive to good cooperation and also friendship, continuous improvement and transparency. At Translogica, scrum is a fixed part of the software development process.



Simple transport management through optimised software

Scheduling can be almost as easy as booking a hotel online. This is because our translogica / dotiga transport and document management system (TDMS) contains all the functions needed for simple, fast and, above all, successful scheduling.



Complete quotation
and order processing



Simple and fast
scheduling from
A to Z



Internal processes and
administration at a glance

Functions of our logistics software



With the translogica/dotiga TDMS, we practice management by exception.

This means that routine activities are essentially taken over by an automated workflow. Your employees only have to deal with deviations or errors, which are reported and processed in real time.

This allows you to focus on value-adding activities for your company's success.

The advantage for you:

with us, you get a combined transport and document management system from one source and one mould.



Complete quotation and order processing

All order-relevant data is recorded in the translogica/dotiga TDMS. The software is an irreplaceable helper for complete quotation and order processing.

- Quick and easy freight calculation and quotation preparation
- Comparison of orders with quotations
- Manual and automatic order creation
- Order import via interfaces and OCR recognition (last mile of digitisation)
- Resubmission management
- Internal and external tendering workflow
- Automated proof of delivery processing
- Automated invoice processing
- Proactive/automated handling of claims
- Automated billing
- Accounts receivable administration and reminders
- Online order entry for customers included
- Track & Trace and document management



Simple and fast scheduling from A to Z

The translogica/dotiga TDMS makes scheduling with all its facets efficient, clear and easy.

- Vehicle and trailer scheduling with graphical vehicle deployment plan
- (Geo-)graphic, map-supported interactive scheduling
- Charter scheduling
- Full-load and part-load scheduling
- Groupage / general cargo scheduling
- Intermodal scheduling with stored train and ferry schedules as well as booking interfaces
- Container scheduling
- Route planning with route optimisation
- Staff deployment scheduling
- All relevant data at a glance in the scheduling plan: driving, rest and arrival times, minute-by-minute delay info, costs, tank level, repair / MOT due dates, etc.
- Telematics integration of all current providers
- Visualisation of the flow of goods with yield and profitability calculation
- Track & Tracing portal
- Interfaces to cargo exchanges
- Intelligent scheduling support
- taking into account historical data, current vehicle locations and TIMOCOM integration



Internal processes and administration at a glance

Extensive master data management of customers, suppliers, subcontractors, personnel, vehicle fleet, loading / unloading addresses.

- Fleet management with workshop management
- Integrated form system including form designer for customising forms
- Extensive WMS (Warehouse Management System) with scanning
- Statistics and BI (Business Intelligence) dashboards in real time
- Interfaces to financial accounting (FIBU)
- Cost accounting and internal cost allocation
- CRM (Customer Relationship Management)
- Flow of goods analysis
- Digital archive - seamless integration
- Management by exception: routine activities are taken over by an automated workflow. Your employees only have to deal with a deviations or errors, which are reported and processed in real time.
- Graphical display of search results with evaluation of internal processes is simple, fast and straight-forward

Machine learning

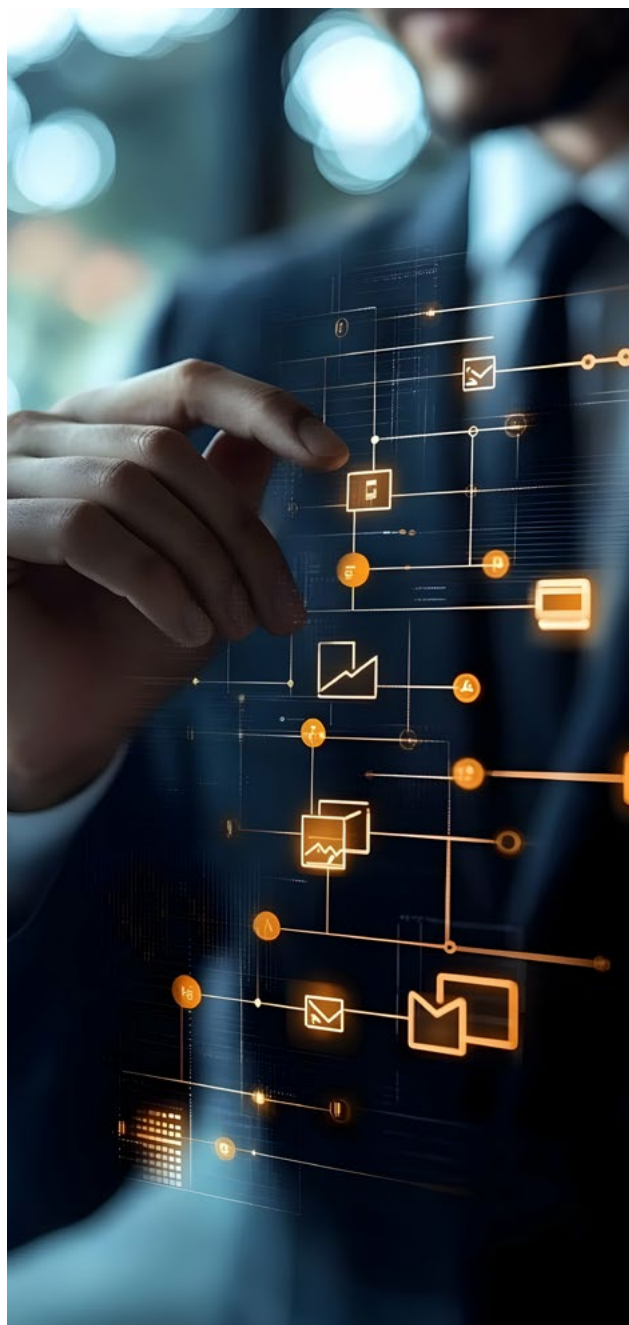
With the translogica/dotiga TDMS, we rely on machine learning, a self-learning system. The software is able to "remember" process steps that have already been carried out, apply the required actions automatically and reliably in the future and thus reduce manual effort considerably.

Our engine's text recognition works with a 100% success rate for digital documents. This enables you to cover the last mile of digitisation in the incoming orders for all your customers.

Our AI algorithms are based on Microsoft's proven Frameworks and thus rely on state-of-the-art methods.

Advantages of AI-supported logistics in your forwarding

- Automatic recognition of all document types
- Automatic field recognition
- Automatic creation of transport orders
- Reading out invoices and automatic further processing



How our kAI makes your day-to-day forwarding easier

translogica's voice assistant kAI navigates you through the various possibilities in the field of artificial intelligence (AI) and machine learning.

kAI helps you to record your transport orders

kAI actively makes suggestions: "Would you like to take tensioning belts again?" or "Seven pallets of bananas were usually collected from this loading/unloading point on Monday, would you like to do that again?"

The interesting thing is that the training is automated on a daily basis by you and the incoming RDTs, as each new order serves as a lesson for our kAI and it is always discovering new combinations. In this way, kAI helps you to avoid input errors and also to increase efficiency.



kAI recognises documents and understands the structure behind them.

This enables kAI to use its AI-based capabilities to automatically scan orders - based on PDF documents or a fax. It is well known that the RDT rate in FTL forwarding companies is rather low, so many orders still have to be entered manually. With the translogica OCR module, we have created the last mile of digitisation of the order interfaces - and thus automatically generate a transport order from a PDF document. This has been a translogica hallmark for many years and is used by numerous customers in daily practice.

What is new is that this module is now self-learning thanks to our kAI. It is therefore no longer necessary to manually create templates for reading a transport request. Enriched with machine learning, translogica automatically creates a template that can read the order automatically.

kAI learns from you and takes over all tasks as soon as it is sure that it can do them at least as well as you.

Workflows and automated processes are an essential part of our software solution. Our customers can now completely enrich and automate tasks that were previously created manually with AI. This is also done by kAI.

The workflow shown here describes a common problem when entering incoming invoices. After recognising the incoming invoice with OCR, the corresponding accounting accounts must also be assigned.

This manual task for (accounting) account determination on an incoming invoice can be trained by the user through the assignments and can be carried out automatically from a certain confidence level. This means that any manual task can be replaced step by step by AI.

Every manual assignment of an accounting account trains the knowledge of our kAI, so that its accuracy increases.

The workflow below shows the same problem solved with the AI module. Here, kAI automatically evaluates the possible account using the data it has learned from. If the confidence is higher than 90, the account is set without manual action by a user.

This technology makes it possible to enrich every manual task with our kAI and thus transfer the expertise step by step from the person carrying out the task to kAI. If you like, call it on-the-job training for our kAI.

Logistics software for (geo-)graphical scheduling

The translogica/dotiga TDMS is an irreplaceable support for scheduling. The system shows you the matching own and third-party vehicles for a job to be planned and recommends the best and cheapest vehicle.

This also enables transparent and profitable scheduling across departments and branches. Orders, tours and vehicles that have already been scheduled can be tracked in real time on an interactive map, together with all relevant data. If necessary, you can thus react flexibly to changing circumstances and take optimisation measures to utilise the fleet.

Scheduling advantages

- Scheduling of FTL/LTL, groupage, intermodal transport
- Various scheduling plans and lists, also for pure intermediaries
- Interactive map scheduling with route optimisation
- Connection of GPS-supported fleet communication
- Real-time display of vehicles from the TIMOCOM platform in the scheduling map
- All relevant data at a glance (driving, rest and arrival times, minute-by-minute delay info, costs, fuel consumption, tank level, repair / MOT due dates, etc.)
- Search for loads and vehicles in TIMOCOM
- Display of historical data (such as the average price for this route)

"With a new IT system, one of the goals we have set ourselves is to put the focus on our staff in order to actively and intuitively support them in their daily tasks. With me as project manager, my team was able to optimise numerous processes and together with innovative digitisations from Translogica automate them in our company.

Today, we therefore use a modern and intuitive graphic scheduling system with which we handle hundreds of thousands of consignments annually, from general cargo to full loads in all Eastern European countries. The software duo gives our employees maximum efficiency and, above all, security in their turbulent day-to-day business, which we are able to constantly improve."



Leith Aissa

Hellmann East Europe GmbH & Co.KG

Optimised route planning

"Our routing department appreciates the integrated route planning in translogica and thus reduces the empty kilometres and toll costs for our trucks. Besides the economic aspect, this also has very positive effects for the environment."

 **Karl Nothegger Junior**
Nothegger Transport Logistik GmbH



Optimised route planning is the key to efficiency, cost savings and adherence to schedules. With the translogica/dotiga TDMS, you always have all of the relevant parameters in view.

The system shows the best current route in terms of time, distance and capacity utilisation and calculates the estimated time of arrival in real time, taking into account driving and rest times or delays due to traffic jams and road works. So you are well equipped for all eventualities and can react flexibly within seconds.

Advantages in scheduling and logistics

- Automatic route calculation with one click
- ETA calculation of the planned routes/orders/stops with remaining driving times
- Automatic dispatch of the planned ETA via link/e-mail/SMS
- Current kilometre and toll calculation
- CO2 calculation
- Calculation of the planned rest breaks
- Time calculation including traffic jams, border waiting times, road works etc.
- Editing of the map material (blocks etc.)
- Geofencing for load status
- Truck attributes: restrictions for trucks (e.g. height restrictions)
- Saving of the geo-coding in the address master data
- Route optimisation/alternative routes
- Guided navigation
- change of the calculated route due to new parameters
- Save and easily recall routes
- Automatic calculation of full and empty kilometres
- Quotation and order entry directly from route planning

Logistical groupage functions for your forwarding company

The integrated groupage handling offers you all the functions that are required for the effective handling of your groupage transports.

Advantages of the logistical groupage functions

- Fortras interfaces/connection of general cargo cooperations
- Automatic routing
- Configurable quality check of the orders
- Plausibility checks
- Runtime calculations
- Flexible rules
- Hall and delivery scanning
- ADR processing
- Automatic local traffic scheduling
- Proactive suggestions for pick-up scheduling
- Processing and monitoring of premium products
- Intelligent workflows for the automation of advice note consignments
- Management by exception through individual workflows
- Automation of service activities
- Online portal for your customers with Track & Trace

"Together with Translogica, we have optimised the innovative all-in-one software solution for all requirements in the general cargo sector for our approximately 3,000 groupage consignments entering and leaving Europe every day, which also supports our local transport scheduling in its daily work through automatic route planning.

Thanks to the integration of telematics and the intelligent use of dashboards, numerous manual processes for monitoring consignments can be dispensed with.

Our next goal is to work with Translogica to further optimise route planning with the support of AI from the data obtained in combination with opening and standing times, integrating traffic data."



Frank Pöhls
Herbert Voigt GmbH & Co. KG

Software for fleet management



"With translogica, we have all issues relating to our fleet of 120 vehicles perfectly under control."

Benjamin Leinsle
Leinsle GmbH

With our translogica/dotiga TDMS, you keep track of everything to do with your entire fleet at all times.

Our powerful software enables you to check, analyse and process all fleet data end-to-end, helping to minimise costs and optimise all processes. Some of our customers manage truck fleets with more than 1,000 vehicles.

Logistical advantages for your forwarding company

- Vehicle management
- Maintenance dates according to time intervals and km travelled
- Evaluations according to groups and individual vehicles
- Contract management
- Vehicle cost accounting
- Claims management
- Consumption analyses
- Filling station module and fuel card management
- Equipment management
- Corresponding appointment management and scheduling management

Software-based workshop management

With translogica, you manage the workshop administration of your entire fleet, from spare parts ordering to the automatic creation of workshop orders, all with great ease and just a few clicks.

Advantages of workshop management

- Spare parts storage bookable at various locations
- Spare parts purchasing with ordering
- Reported stock
- Automatic creation of workshop orders from deadline management
- Generation of new deadlines after completion of workshop orders
- Work orders with time recording
- Cost accounting
- Processing of third-party repairs incl. invoicing
- Flexible billing models
- Full barcode function with hand scanner connection



"With integrated workshop management in translogica, we benefit from absolute cost transparency, extensive spare parts management and intuitive usability, which our employees really appreciate."



Georg Dettendorfer

Johann Dettendorfer Spedition
Ferntrans GmbH & Co. KG

Intelligent warehouse management



The translogica Warehouse Management System (WMS) with integrated scanning solution and full barcode functionality offers you much more than just a significant simplification of the management and organisation of your warehouse.

Our powerful and reliable software controls the entire flow of goods, increases efficiency and thus contributes to cost savings.

"With the translogica WMS and the corresponding scanners, we organise warehouse logistics for several major customers and appreciate the tremendous depth of integration. Our customers attribute the highest level of professionalism to us for this."



Oliver Girr
Girr Logistik GmbH

Functions for your forwarding company

- Booking incoming and outgoing goods
- Combination with transport planning
- Goods movements and stock order management
- Storage location and parking space management
- Inventory management
- Different types of storage and several locations
- Prohibitions on combined storage
- Current stock overview
- Order warnings
- Scanning
- Data interfaces
- Flexible stock money accounting
- Online access for customers with webshop function and stock level display
- Picking
- Different storage principles (FIFO, LIFO)
- Seamless integration of document management

Web portals for your forwarding company

For the rapid integration of your customers into internal processes, our translogica customers are able to use our translogica company portal:

- Online order entry
- Shipment tracking / Track & Tracing
- Delivery receipts directly in the portal
- Invoices directly in the portal
- Online shop for warehouse customers

For the integration of your subcontractors, our translogica company portal is available, which can be used both with and without registration:

- Online transmission of transport orders
- Confirmation of delivery documents
- Credit notes online
- Onboarding of new subcontractors with necessary documents

Software-based advantages

- Reduction of manual order entry
- Fewer shipment follow-on requests
- Simplified invoicing process
- Paperless processing and reduction of effort
- through fast POD feedback, rapid invoicing and higher liquidity

"In addition to the subcontractor portal, the translogica online customer portal is used a huge amount, especially by our general cargo customers.

In addition to Track & Tracing, they can also view delivery receipts, invoices and statistics directly there. This makes collaboration easy and efficient."



Jochen Abt

Lakner Spedition + Logistik GmbH & Co. KG

"We have been working with the translogica/dotiga TDMS since 2008 and handle around 250,000 full loads a year exclusively with subcontractors. Our users benefit from a total of more than 60 workflows in translogica, which automate all processes from carrier onboarding to document feedback and invoicing."



Matthias Wallmann

Vertex GmbH



Special features for logistical scanning

The translogica app is the flexible solution for scanning processes and fleet communication.

The bandwidth ranges from warehouse and hall scanning to delivery scanning, including proof of delivery (POD), or even proof of damage - all within seconds. Operation is user-friendly and intuitive.

Software advantages in transport management

The translogica app is ideal for:

- Online transmission of transport orders
- Confirmation of delivery documents
- Credit notes online
- Onboarding of new subcontractors with necessary documents

Special features of the translogica scanning app:

- Display of ETA times for goods receipt in the hall
- Chaos scan: inbound, outbound and delivery scan possible
- Customisable scanner interface and definable workflows

Document management for transport logistics

Professional and automated document management with dotiga

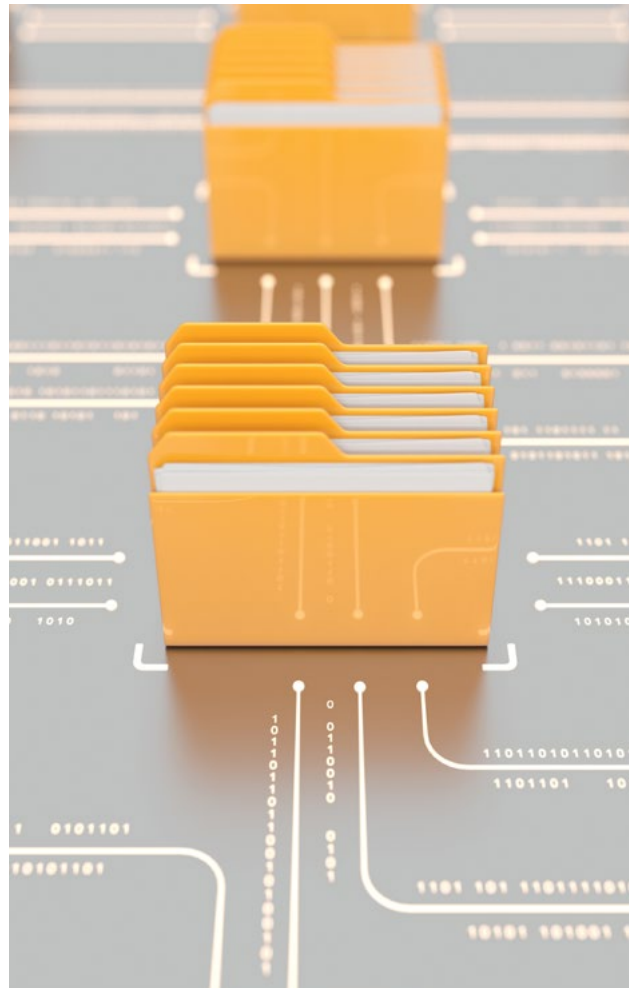
The dotiga document management system (DMS) enables you to digitally store documents of all kinds in an audit-proof manner and to find them quickly. These are categorised in a simple and efficient way and stored securely and timelessly in the archive

The integrated version management allows the user to view older versions of a document. For convenient categorisation, document types can be freely defined and provided with customisable fields. One possible document type, for example, is "Incoming invoice" with the additional fields "Invoice number" and "Supplier". These customisable document types offer you maximum freedom in terms of defining your business processes and the internal structure of your company.

dotiga workflow management

The dotiga workflow management system (WFMS) creates the ability to carry out company-specific business processes in an optimised and automated way.

Business processes are executed in the form of workflows within the dotiga document management system (DMS).



"We have been using the dotiga DMS for many years at various locations within our European organisation. In addition to audit-proof archiving, we utilise numerous workflows, for example, for processing incoming invoices, which gives us more and more opportunities to work paperless."



Bram Ewals
Ewals Cargo Care B.V.

Successful digitisation

"Since my company was founded, I have relied on translogica and the possibilities that the workflows bring. They enable my employees to work efficiently and successfully. Thanks to numerous automated processes, I hardly need any staff for administration."

→ **Thomas Kogler**
Spedition GmbH

A successful digitisation strategy is based on well thought-out Business Process Management (BPM). This means modelling in-house business processes with intelligent workflows.

The secret of success of the dotiga workflow engine lies in its ability to adapt to individual, company-specific processes and it is based on augmented analytics. With this, IT tools independently analyse data and derive recommendations for action.

The goal: maximum optimisation.

Automation and flexible configuration with dotiga workflow management

With the dotiga workflow management system, company-specific processes are flexibly configured and automatically executed, including on the web and on mobile devices, so that you can control your company from anywhere. You can also involve your customers and subcontractors. These can be seamlessly integrated into your process chain via web portals or feedback via telematics or SMS. This way, your business gains efficiency, quality and transparency. This saves time, money and paper.



Translogica GmbH

office@translogica.net

Austria: +43 512 277 681 - 0

Germany: +49 831 995 933 - 0

Innsbruck Head Office

Eduard-Bodem-Gasse 2
6020 Innsbruck
Austria

Vienna Office

Handelskai 94–96
1200 Vienna
Austria

Krems Office

Dr.-Franz-Wilhelm-Straße 2
3500 Krems
Austria

Kempten Office

Linggstraße 1
87435 Kempten
Germany

Hamburg Office

Kapstadtring 7
22297 Hamburg
Germany



translogica.net